

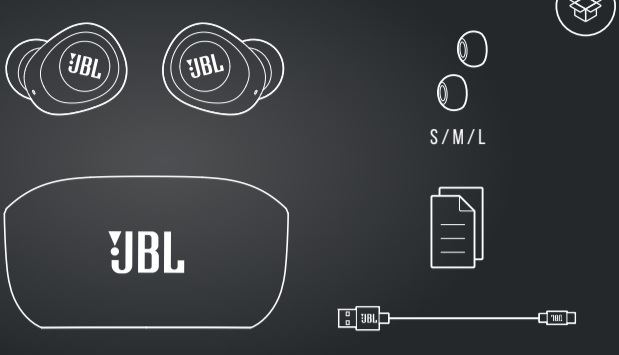


# QUICK START GUIDE

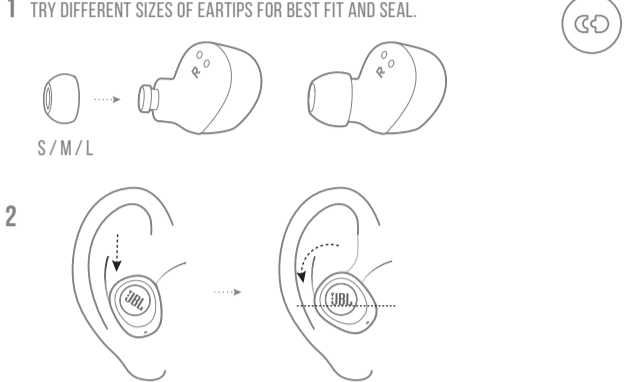
VIBE100 TWS



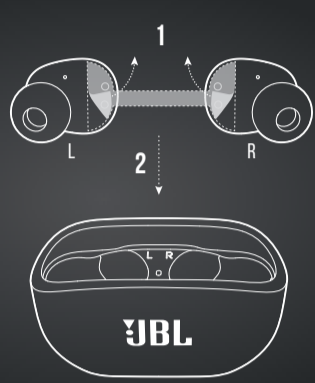
## WHAT'S IN THE BOX



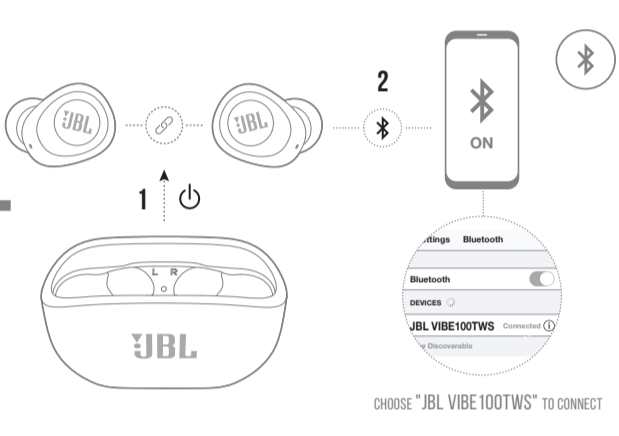
## HOW TO WEAR



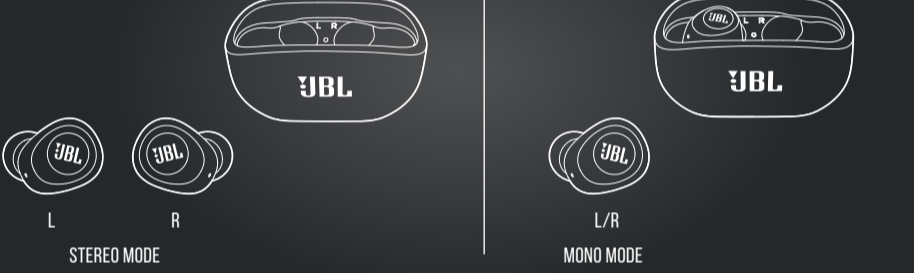
## FIRST TIME USE



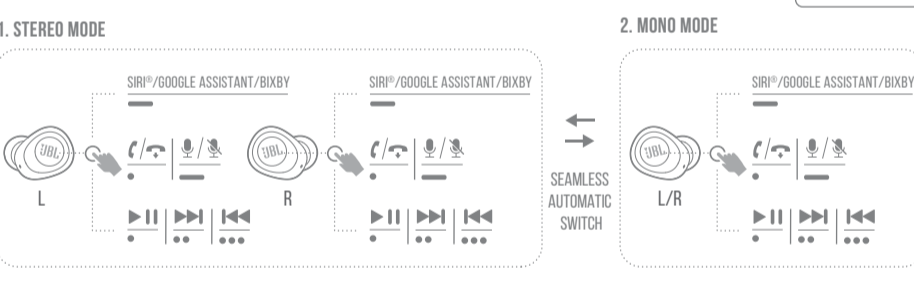
## POWER ON & CONNECT



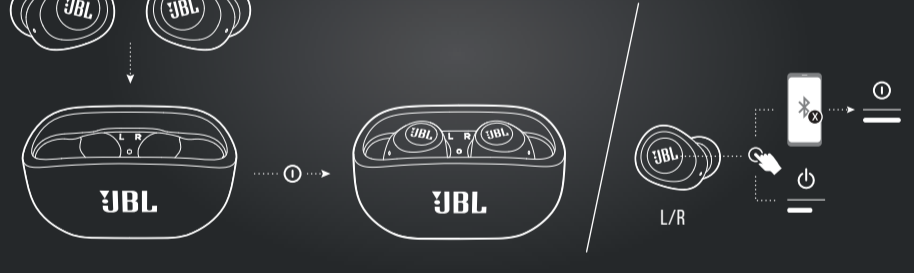
## DUAL CONNECT



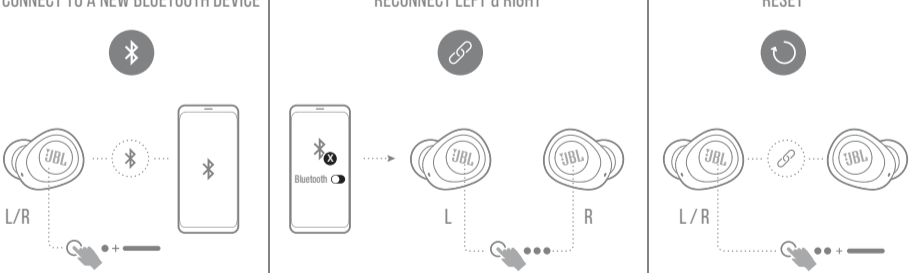
## BUTTON COMMAND



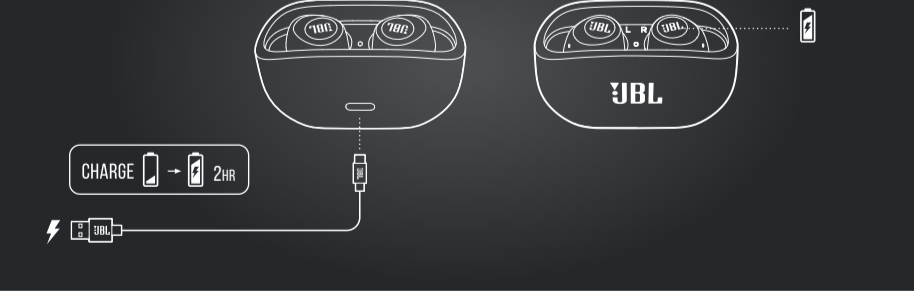
## POWER OFF



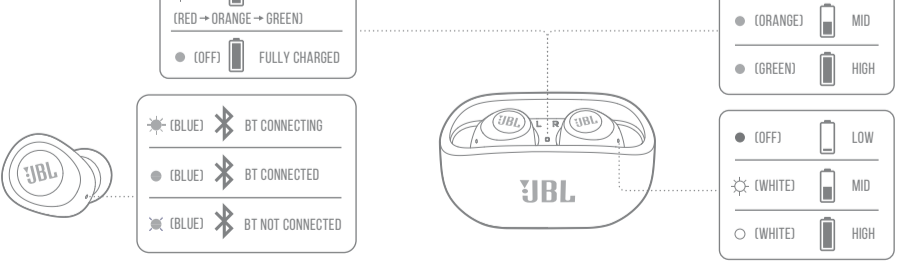
## MANUAL CONTROLS



## CHARGING



## LED BEHAVIORS



## TECH SPEC

**Model:** VIBE100TWS  
**Driver Size:** 8 mm / 0.31" Dynamic Driver  
**Power supply:** 5V --- 1 A  
**Weight:** 46.3 g / 0.102 lbs  
**Earpiece:** 5.1 g / 0.011 lbs (10.2 g / 0.022 lbs combined)  
**Charging case:** 36.1 g / 0.08 lbs  
**Headset battery type:** Lithium-ion Battery (45 mAh / 3.7 V)  
**Charging case battery type:** Lithium-ion Battery (550 mAh / 3.7 V)  
**Charging time:** 2 hrs from empty up to 5 hrs  
**Music playtime with BT on:** 2-4 - 2.4835 GHz  
**Frequency Response:** < 10 dBm  
**Impedance:** 16 ohm  
**Sensitivity:** 105.5 dB SPL@1kHz  
**Maximum SPL:** 94 dB  
**Microphone sensitivity:** -11.3 dBV@1 kHz / Pa  
**Bluetooth version:** 5.0  
**Bluetooth profile version:** A2DP V1.3 AVRCP V1.6 HFP V1.7  
**Bluetooth transmitter frequency range:** 2.4 - 2.4835 GHz  
**Bluetooth transmitter power:** < 10 dBm  
**Bluetooth transmitter modulation:** GFSK, n/4-DQPSK, 8-DPSK  
**Maximum operation temperature:** 45°C



